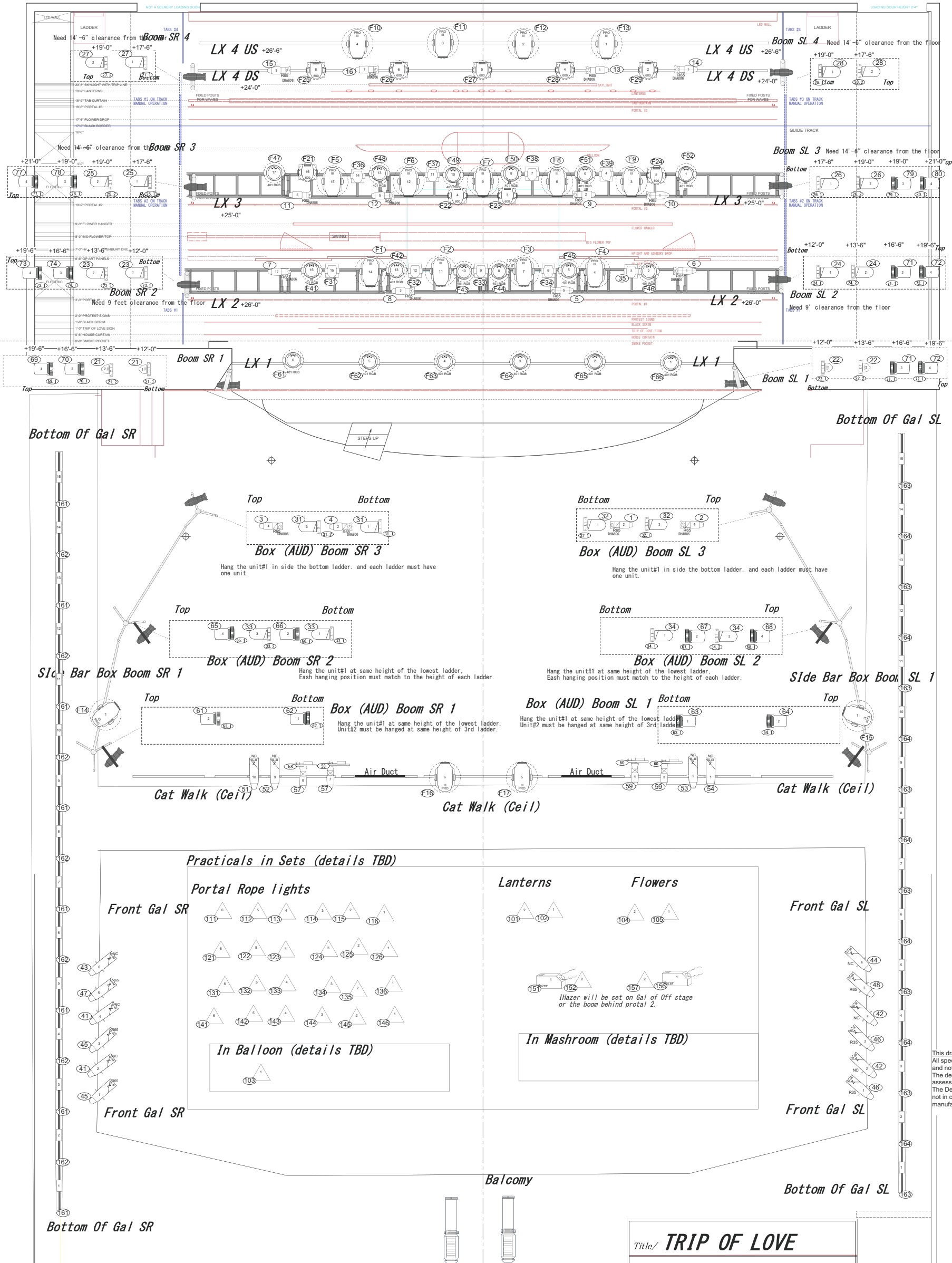


NOTE

Boom SL/SR 2 position. Keep 9' clearance from the deck
 Boom SL/SR 3.4 position. Keep 14'-6" clearance from the deck



Legend

- ETC Source 4 Zoom 15-30 750w
- ETC Source 4 19 degree 750w
- ETC Source 4 26 degree 750w
- ETC Source 4 36 degree 750w
- ETC Source 4 par NSP 750w
- Par-64 NSP 1000w
- Martin MacIII profile
- Martin Mac 600
- Martin Quantum Wash
- Martin 401 Wash
- Clay Parly Sharpy
- Altman 703 UV Fresnel 400w
- Careido Machine
- Wyblon Color Ram 2
- Dowser for UV Fresnel (Color scroller)
- A size Gobo Holder
- Practical
- UV Black light 40w

This drawing represents design intent and concepts. All specifications herein related solely to the appearance of the lighting and not to matters of electrical or structural soundness and/or safety. The designer and assistant designers are not qualified to assess the electrical or structural appropriateness of the design. The Designer will make changes to any specifications found not in compliance with proper safety procedures or manufacturers specification.

Title/ TRIP OF LOVE	
Theater/ Little Shubert Theater	
Date/ 07 27 2015	Design/ Tamotsu Harada
Scale/ 1:24	Assistant/ Kazuhiko Takata Mail/ takata@cat-group.co.jp
FAT OFFICE. CO. LTD.	
American Version	Drawn by Ayumu Poe Saegusa Last Update: 07/29 2015